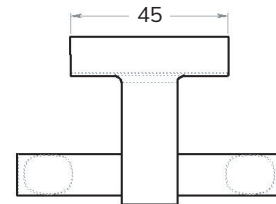
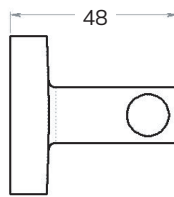
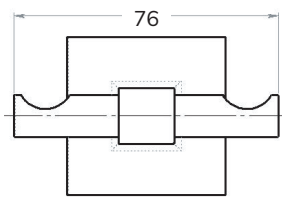
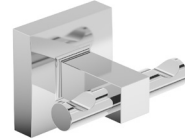


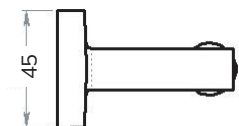
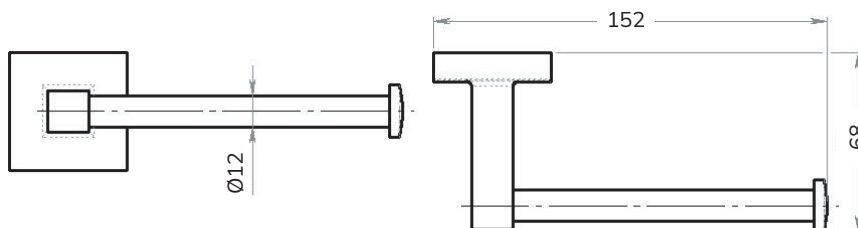
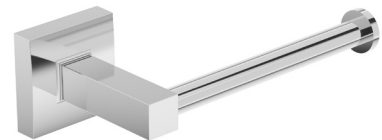
PIAVE Robe Hook

CODE	UA0007
MATERIAL	Cromall®
DIMENSIONS	See technical drawing
FIXINGS	Screw to wall fixings supplied



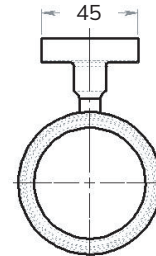
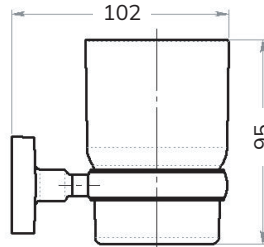
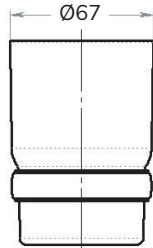
PIAVE Toilet Roll Holder

CODE	UA0006
MATERIAL	Wall plate in galvanised steel. Support in Cromall® Chromed AISI 201 stainless steel tube Chromed ABS roll stopper
DIMENSIONS	See technical drawing
FIXINGS	Screw to wall fixings supplied



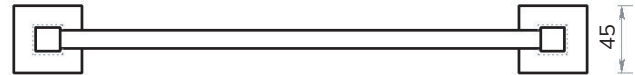
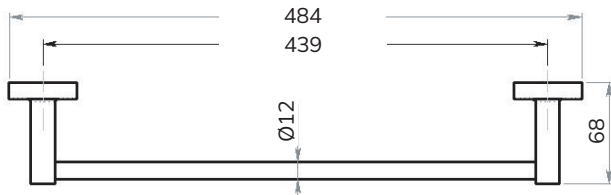
PIAVE Toothbrush Holder

CODE	UA0010
MATERIAL	Wall plate, cover plate, support and ring in Cromall® Glass in frosted glass Translucent thermoplastic resins gasket
DIMENSIONS	See technical drawing
FIXINGS	Screw to wall fixings supplied



PIAVE Towel Rail

CODE	UA0009
MATERIAL	Chromed AISI 201 stainless steel rod Wall plates, cover plates and supports in Cromall®
DIMENSIONS	See technical drawing
FIXINGS	Screw to wall fixings supplied



PIAVE Towel Ring

CODE	UA0008
MATERIAL	Wall plate in galvanised Cromall® Cover and support in chromed Cromall® Chrome-plated AISI 201 stainless steel tube
DIMENSIONS	See technical drawing
FIXINGS	Screw to wall fixings supplied

