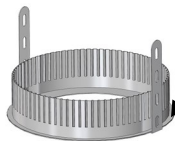
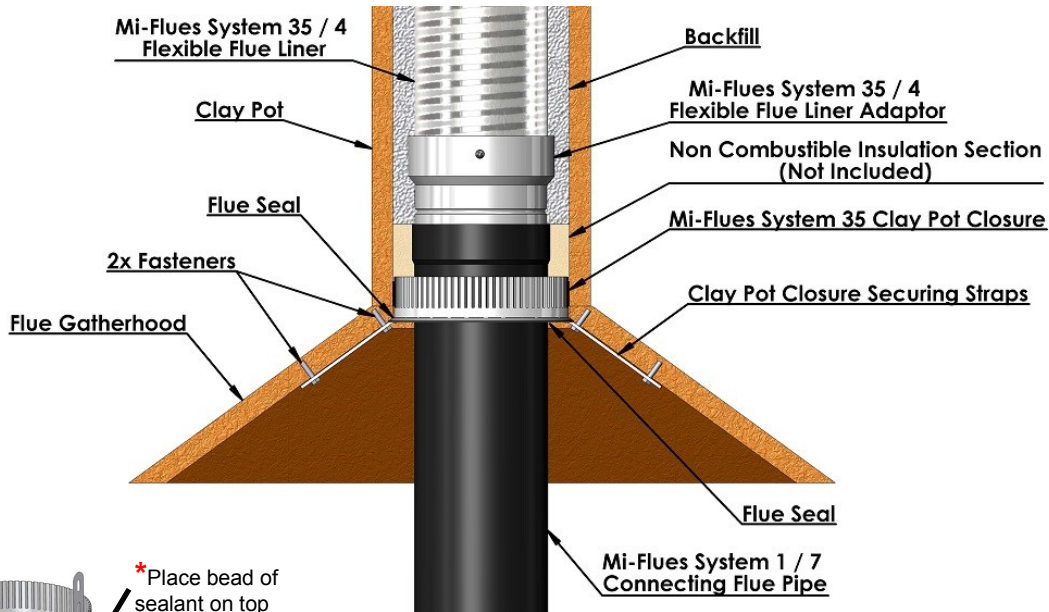
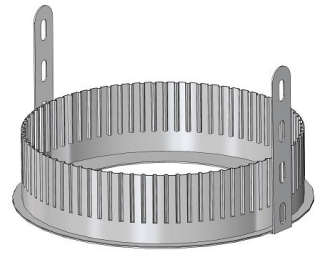




Clay Pot Closure

The Mi-Flues Clay Pot Closure has three main purposes:

- It allows for the base of the relined clay pot chimney to be easily closed off.
- It allows the relined clay pot chimney to be backfilled.
- It centralises the connecting flue pipe.



* Place bead of sealant on top side of lip

Fitting Instruction

To install, slide the clay pot closure over the **male end** of the Mi-Flues System 1/7 connecting flue pipe **prior to installation**.

Place a bead of Mi-Flues high temperature sealant (rated to 1000°C) or a suitable flue seal around the top side of the clay pot closure lip*. Once the flue has been fixed into position push the clay pot closure inside the clay pot, ensuring the securing straps have been folded into a suitable position to allow for securing against gather hood or clay pot.

Push the clay pot closure firmly into the clay pot until the lip has mated with the surface of the pot. Ensure sealant is still intact and provides an adequate seal. Once placed into position fasten securing bands to gather hood using fasteners adequate for the purpose.

Seal joint between clay pot closure and connecting flue pipe using Mi-Flues high temperature sealant (rated to 1000°C) or a suitable flue seal.

Product Code	Description
35-125-CC	125mm x 200mm Clay Pot Closure
35-150-CC	150mm x 200mm Clay Pot Closure

Installation

The product is easy to handle, but care should be taken when holding, fitting or assembling any part of the system. Users are advised to use suitable precautions such as gloves, eye/face protection, protective clothing etc. to avoid injury. Installers should be aware of the Safety, Health and Welfare at Work Act 2005 & Safety, Health and Welfare at Work (general application) regulations 2007.

Particular attention should be taken to ensure suitable PPE is used when applying certain fireclays which can be of a caustic nature, as well as when using any other substances which may be harmful.

All flue systems must be installed according to current Building Regulations. Mi-Flues has adopted a policy of continuous product review, and in the interests of development and improvement the Company reserves the right to vary the appearance and performance of any of its products without prior notice. Correct at time of print. For updates please check our website.