

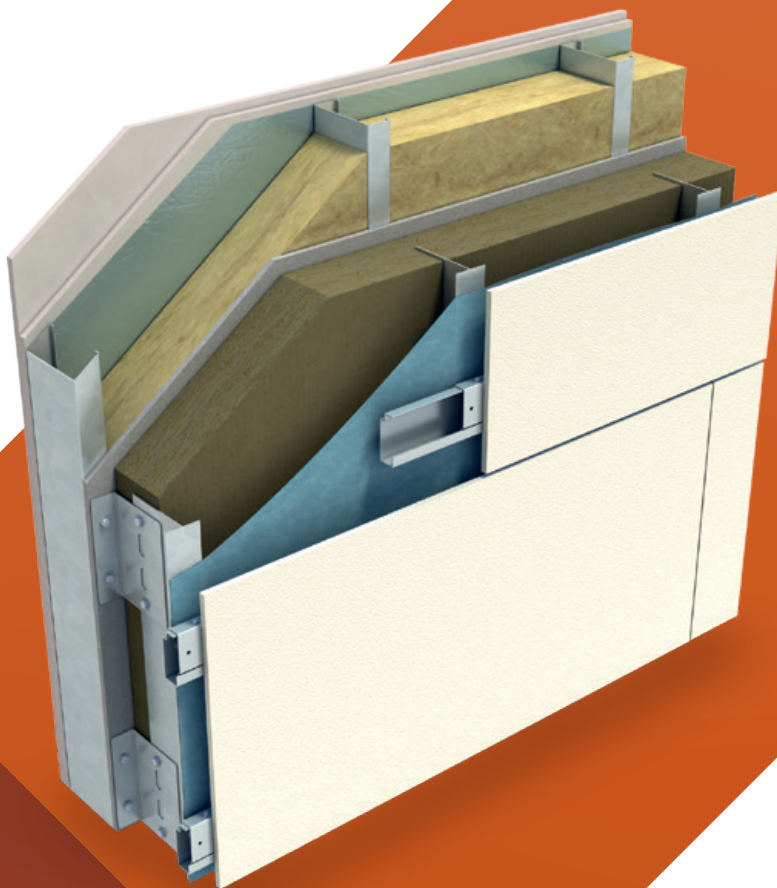
StoneWool

Non-Combustible Insulation

Non combustible Euroclass A1 Stonewool Insulation

Walls

Insulation for
Ventilated Rainscreen Cladding



Xtratherm[®]

More than insulation

StoneWool

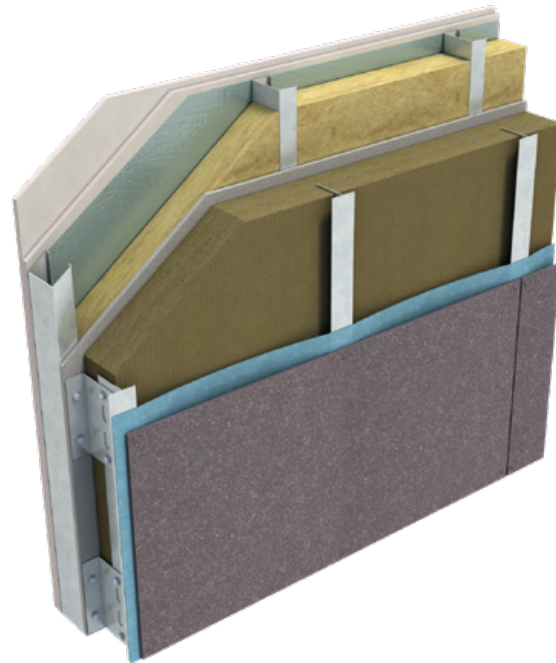
Non-Combustible Insulation

SW/RS

Insulation for
Ventilated Rainscreen Cladding

Xtratherm's range of non-combustible, Euroclass 'A1' stonewool insulation provides surety when the highest fire performance is required. Stonewool Rainscreen insulation is suitable for use in ventilated facade, rainscreen and framing applications and closed systems such as curtain walling.

Xtratherm's Stonewool insulation provides a robust uniform high density solution throughout the product providing for resilience during the build process for the application of mechanically fixed substrates.



Specification Clause

The rainscreen insulation shall be Xtratherm Stonewool ___mm manufactured to BS EN 13162:2012+A1:2015. The Xtratherm Stonewool ___mm with a Declared DoP Lambda value of 0.035 W/mK to achieve a U-Value of ___W/m²K for the wall element. To be installed in accordance with instructions issued by the facade engineer.

Refer to NBS clause
M21 210, M21 220



Thermal Resistances

Board sizes 1200 x 600mm (Edge Profile SE)

* Thickness (mm)	R _s (m ² K/W)
50	1.40
75	2.10
100	2.85
125	3.55
150	4.25

* Other sizes available dependent on quantity and lead time

Resistance 'R' Values

The resistance value of any thickness of Xtratherm insulation can be ascertained by simply dividing the thickness of the material (in metres) by its declared lambda value, for example: Lambda 0.035 W/mk and thickness 100mm -> 0.100/ 0.035 -> R-Value = 2.85. In accordance with EN 13162 R-Values should be rounded down to the nearest 0.05 (m²K/W).

Euroclass A1 Fire classification

Robust high density

Improved acoustic performance

Suitable for use in high rise buildings

Xtratherm®

Installation

Xtratherm Stonewool is delivered in packs wrapped in polythene suitable for short term storage in the open. For longer periods of storage packs should be stored off the ground and under cover.

The high density panels are robust enough to endure a reasonable length of time exposed during installation, however as with all building processes, protection during the build process should be provided where possible. Breather membranes if specified within the system will provide additional protection.

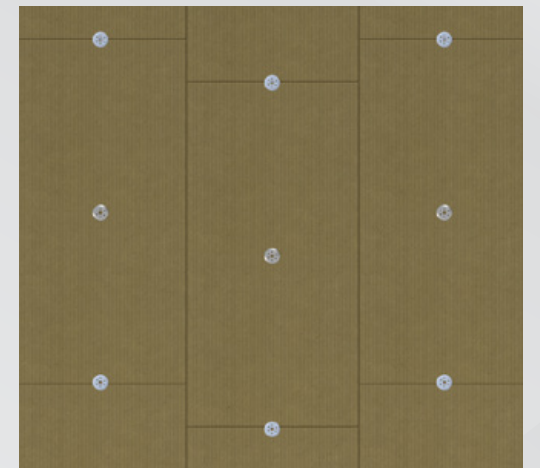
Panels are lightweight and easily cut to any shape with a fine tooth saw or a sharp knife. Neat fitting to adjoining boards and around any penetrations is essential to achieve good thermal performances.

Tight abutment with adjoining boards allows for continuity.

Boards should be applied in a break-bonded pattern. With all joints tightly butted. Using a combination of metal and polypropylene 'mushroom' type fixings with a minimum diameter of 70mm will provide adequate fix until the main cladding system is applied.

U-Values

The calculation of U-Values Guidelines given in BR443 Conventions for U-Value calculations and EN ISO 6946:2017 Building components and building elements - Thermal resistance and thermal transmittance ___ Calculation method should be followed. As proprietary



All penetrations, through the insulation layer, at floor junctions and openings should be accounted for in the thermal calculations. For advice on rainscreen fixings, contact the system specifier, ensuring all fixings are accounted for when modelling thermal performance. Guidelines given in BR443 Conventions for U-Value calculations and ISO 6946:2017 Building components and building elements ___ Thermal resistance and thermal transmittance ___ Calculation method should be followed.

Suitable Board Fixing Manufacturers -
Hilti/EJOT/Fischer

systems are used, and bespoke fixing patterns required, full analysis of wall lay out and fixing system supplied should be analysed for accurate calculation. Contact Xtratherm Technical Support for advice.

Xtratherm®

More than insulation

The Sustainable Solution

Specifying Xtratherm is a real commitment to minimising energy consumption, harmful CO² emissions and their impact on the environment. Using our products is one of the most effective ways to reduce energy consumption – in fact, after just eight months the energy they save far outweighs the energy used in their production. In addition, our manufacturing facilities operate to an ISO 14001 certified Environmental Management System.

Recyclability

Xtratherm Stonewool is manufactured from a natural and plentiful resource and is recyclable. Utilising StoneWool in new build and refurbishment projects contributes to reducing the lifetime production of harmful emissions from buildings, minimising heating and cooling demand.

Responsible Sourcing

Xtratherm has BES 6001 certification for responsible sourcing. The second BREEAM credit under that category is based on responsibly-sourced materials – at least 80% of the total insulation used in roofs, walls, ground floors and services must meet any of tier levels 1 to 6 in the BREEAM table of certification schemes. Our Environmental Management System is certified under EN ISO 14001, and our raw materials come from companies with similarly-certified EMS (copies of all certificates are available for BREEAM assessments). This level of responsible sourcing meets tier level 6 in the BREEAM table.

Global Warming and Ozone Depletion

All Xtratherm Insulation products use CFC-and HCFC-free materials, and are manufactured using a blowing agent with a low GWP and zero ODP.

Good workmanship and appropriate site procedures are necessary to achieve expected thermal and airtightness performance. Installation should be undertaken by professional tradespersons. The example calculations are indicative only, for specific U-Value calculations contact Xtratherm Technical Support. Xtratherm technical literature, Agrément certifications and Declarations of Performance are available for download on the Xtratherm website. The information contained in this publication is, to the best of our knowledge, true and accurate at the time of publication but any recommendations or suggestions which may be made are without guarantee since the conditions of use are beyond our control. Updated resources may be available on our websites. All images and content within this publication remain the property of Xtratherm.

Xtratherm UK Limited

Park Road Holmewood
Chesterfield, Derbyshire
United Kingdom
S42 5UY

T + 44 (0) 371 222 1055
F + 44 (0) 371 222 1044

info@xtratherm.com

xtratherm.com

Xtratherm Limited

Liscarton Industrial Estate
Kells Road, Navan
Co. Meath, Ireland
C15 NP79

T +353 (0) 46 906 6050
F +353 (0) 46 906 6090

info@xtratherm.ie

xtratherm.ie

ISO 9001 | Quality Management Systems

ISO 14001 | Environmental Management Systems



Xtratherm, part of UNILIN group.